



Heriot Road, London, NW4

Located on the first floor of this end of terrace period property, is this well proportioned three double bedroom apartment.

The property boasts three bedrooms (all recently carpeted) all with plenty of natural light, a separate lounge which leads to a fitted kitchen, complete with all white goods. A family sized bathroom and extra WC finish the home.

The apartment is ideally located within a short commute to Hendon Central tube station and the Hendon Park.

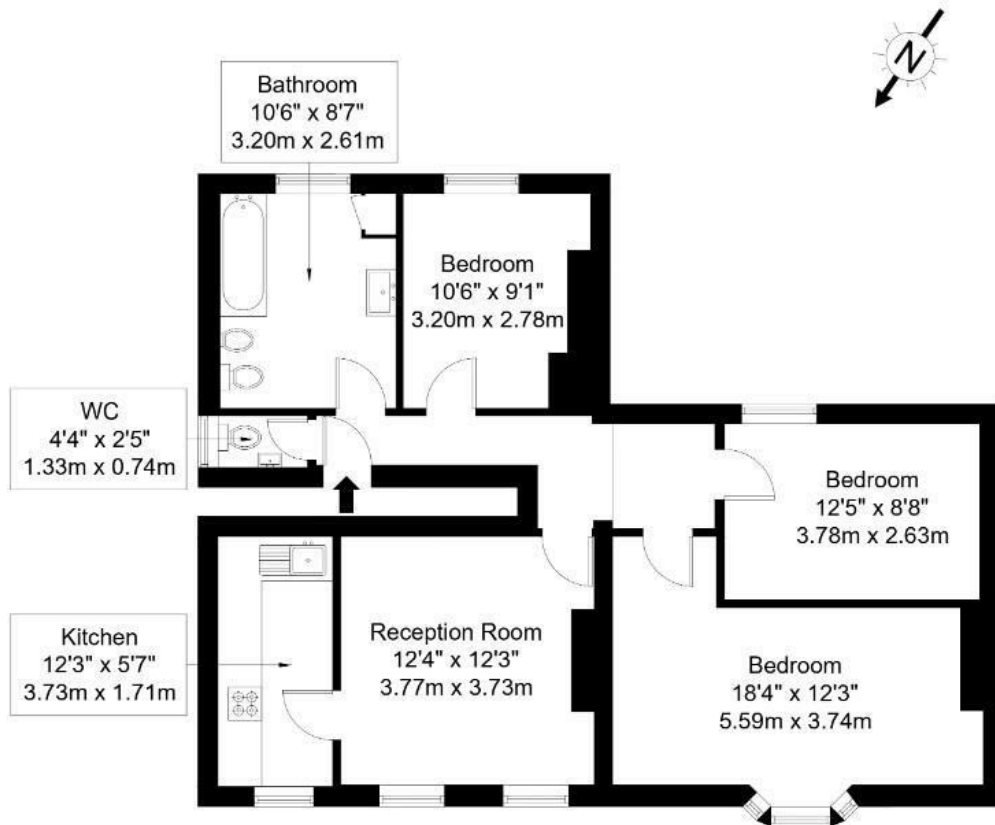
Families or sharers can apply to rent this fully managed unit on a long term basis.

- First floor apartment
- Three double bedrooms
- Large bathroom
- Extra WC.
- Triple aspect views
- Fully managed let
- Exclusive to Fine Living

£2,250 Per month

Heriot Road, NW4 2EG

Approx Gross Internal Area = 77.12 sq m / 830 sq ft



First Floor

Ref :

Copyright

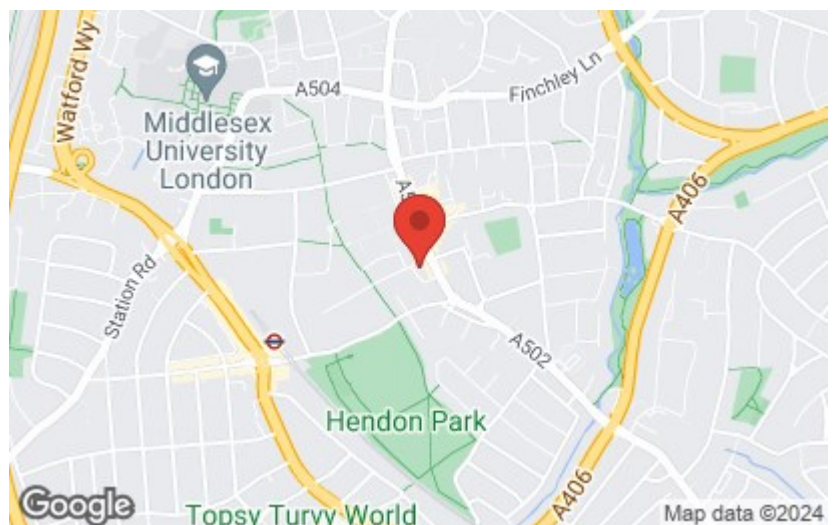
**BLEU
PLAN**

The Floor plan is not to scale and measurements and areas shown are approximate and therefore should be used for illustrative purposes only. The plan has been prepared in accordance with the RICS code of Measuring Practice and whilst we have confidence in the information produced it must not be relied on. If there is any aspect of particular importance, you should carry out or commission your own inspection of the property.

Copyright @ BLEUPLAN

Energy Efficiency Rating		
	Current	Potential
Very energy efficient - lower running costs		
(92 plus) A		
(81-91) B		
(69-80) C		
(55-68) D		
(39-54) E		
(21-38) F		
(1-20) G		
Not energy efficient - higher running costs		
England & Wales	EU Directive 2002/91/EC	

Environmental Impact (CO ₂) Rating		
	Current	Potential
Very environmentally friendly - lower CO ₂ emissions		
(92 plus) A		
(81-91) B		
(69-80) C		
(55-68) D		
(39-54) E		
(21-38) F		
(1-20) G		
Not environmentally friendly - higher CO ₂ emissions		
England & Wales	EU Directive 2002/91/EC	



3rd Floor, 6-8 Bonhill Street, City of London, EC2A 4BX

Tel: 02080040100 | Email: hereforyou@fineliving.life

www.fineliving.life